



Pushing the limits

Contents

Introduction	1
Company Timeline	2
Maintenance & Customer Service	3
Stockyard Equipment	4
Completed Projects:	
• Crusher Refurbishment	5
• Chute Design & Manufacture	6
• Conveyor Tripper Cars	7
• Harrow Breakdown Refurbishment	8
• New Rotary Breaker Installation	9
• Reclaimer Refurbishment	10
• Slew Bearing Replacement	11
Supporting Spares	12
Partnership with Mutale Engineering	13
Planting Back to the Community	14

INTRODUCTION



Certificate Number : 17192
ISO 9001, ISO 14001, ISO 45001

African Commodity Handling (ACH) is a ISO 9001, 45001, 14000 and 3834 certified company established in 2013 to offer 360° commodity handling and project management solutions that are cost effective, reliable and can stand up to the most exacting industry standards, targeting the Sub-Sahara Africa market in the mining, energy (power generation) and construction sectors.

Our business model focuses on the development of long-term partnerships across our stakeholders, ensuring that, based on these relationships, we diligently promote our business growth and future sustainability. We are a company that is value driven, placing our customer's needs and satisfaction above all else – a winning formula for our market growth objectives.

Our work ethic is inspired by our company value set, born out of the principles enshrined in our vision and mission:

OUR VISION

To be the leading African engineering and maintenance company in the commodity handling sector, operating globally.

OUR MISSION

To provide world class service in the supply and maintenance of materials handling systems.

This brand ambition is supported by our strict adherence to our core values that reinforce the commitment to value driven relationships and partnerships that are future focused.

OUR VALUES

- Continuous Improvement
- Team Work
- Service Excellence
- Stakeholder Focus

SCHADE
AUMUND GROUP

GENMA  [®]
Our Specialty - Your Strength

KOCH
SOLUTIONS

 **McLanahan** [®]



COMPANY TIMELINE

2020 - Mutale Engineering Agreement



2020 - ISO Accreditation 3834 Part 2

2019 - KOCH Agreement



2020 - McLanahan Agreement

2019 - GENMA Agreement



2019 - ISO Accreditation 9001/45001/14000

2018 - South 32 mines Contract



2018 - Fraser Alexander Contract

2013 - Opening



2013 - SCHADE Agreement

MAINTENANCE & CUSTOMER SERVICE

We also provide a comprehensive after sales support and service for equipment we supply with guaranteed availability of spare parts. Our service turnaround periods are among the best in the industry for both break-downs and routine maintenance to ensure that our customers experience the most minimal of disruptions in their operations to safeguard their productive output.

Our holistic approach to doing business means that we are not only just focused on providing physical equipment and operational infrastructure to our customers, but are continuously monitoring and evaluating other non-technology aspects of the operational workspace such as health, safety and environmental integrity.

To that end our solutions are designed to proactively eliminate and mitigate safety, health and environmental risks in these highly specialised and heavy equipment intensive industries.

Spare Parts - All from one Source

- Complete range of OEM spare parts
- Highest quality en reliability
- Tailor-made spare part solutions
- Spare parts offering based on operation data

Inspections - Safety for your equipment

- Troubleshooting and problem resolution
- Improvements in plant safety and performance
- Audits & structural analysis
- Testing

Maintenance - Conservation of plant value

- Smooth maintenance works by qualified personnel
- Technical support officer
- Preventive maintenance
- Condition based maintenance concepts

Life Enhancement Program

- Economic rehabilitation of existing equipment/plants for increased capacity, productivity and lifetime

Technical Service

- Assembly and commissioning services
- Life cycle analysis
- Repair
- Training
- Feasibility study, documentation studies
- Risk assesment

Optimize Assets

- Operation & maintenance
- Service contracts to match plant requirements
- EHS improvements



STOCKYARD EQUIPMENT

Key Material Handling Offerings

- Overland Belt Conveyors
- In-Plant Belt Conveyors
- Pipe Conveyors
- Bucket Chain Excavators
- Bucket Wheel Stacker - Reclaimers
- Scraper Reclaimers
- Radial Stackers
- Belt Feeders
- Chutework & Gates
- Train Loading / Unloading
- Rotary coal breakers
- Crushers
- Feeders

Belt Conveying Equipment

- Overland Belt Conveyors
- In-Plant Belt Conveyors
- Pipe Conveyors

Stockyard Equipment

- Bucket Chain Excavators
- Bucket Wheel Reclaimers
 - Boom-Type
 - Bridge-Type
 - Crawler Mounted
- Bucket Wheel Stacker-Reclaimers
- Scraper Reclaimers
 - Portal-type
 - Side Type
 - Bridge-Type
- Stackers
 - Boom Type (Crawler & Rail)
- Stockyard Management System



SOME OF THE COMPLETED PROJECTS

CRUSHER REFURBISHMENT



Scalping screen and rolling rings wear rate was very high and did not last long



CRUSHER REFURBISHMENT - FINAL PRODUCT



Hard face welding used on the rings



Minimising the risk of exposing people by replacing the rolling rings frequently. (People safety)

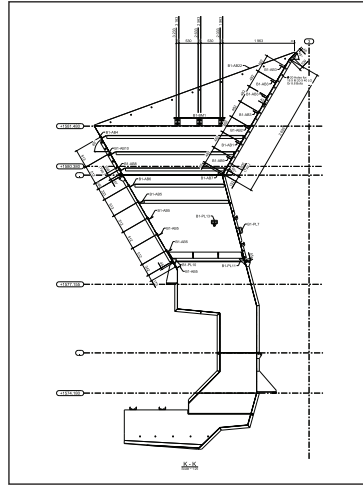
To minimise the cost and workload. (Cost savings)



After hard facing the scalping screen and the rolling rings last longer and be more durable. (Quality)

As this was implemented production was increased

CHUTE DESIGN AND MANUFACTURE - INHOUSE



Chutes designed & fabricated at the workshop

CHUTE TRANSPORTATION TO SITE



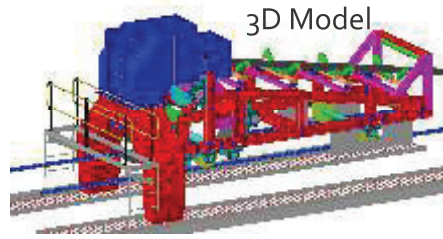
CHUTE INSTALLATION ON SITE

Pick shaft installation

Pick shaft refurbished at the workshop
And ready to go



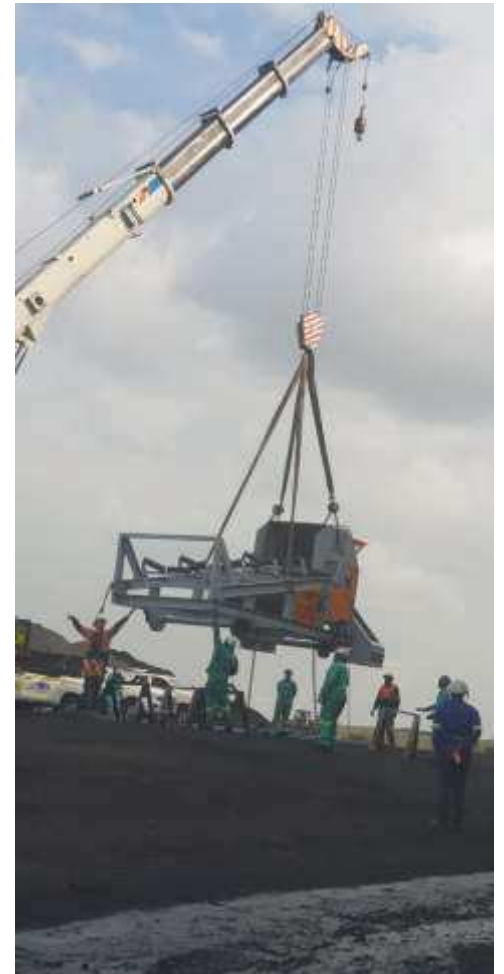
CONVEYOR TRIPPER CARS DESIGN FOR POWER GENERATION



Conveyor tripper designed & fabricated at the workshop



CONVEYOR TRIPPER CARS TRANSPORT AND INSTALLATION



HARROW BREAKDOWN REFURBISHMENT

The Harrow refurbishment in Koorfontein mine.



Tandem Lifting Used To Place Harrow



Paint Thickness Test



NDT Testing



NEW ROTARY BREAKER INSTALLATION

New rotary breaker supplied and installed at Koornfontein mine



Lifting into position



Civil works prepared up front



RECLAIMER REFURBISHMENT



Teams assembling the Harrow



SLEW BEARING REPLACEMENT



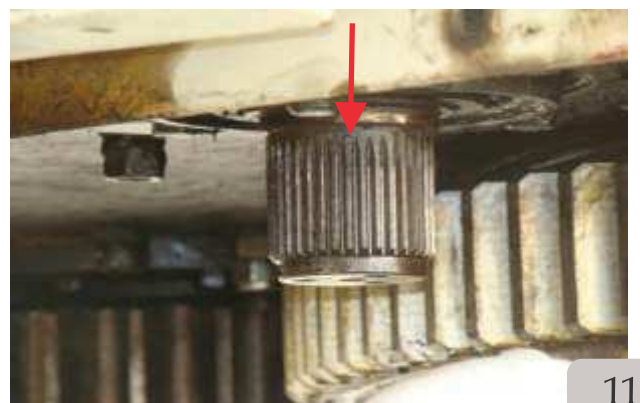
Lifting used to position the slew bearing in place



Slew Bearing replacement in Venetia diamond mine.



Lubrication system installed and functioning



SUPPORTING SPARES

We can Supply the following:

- Conveyor Belts
- Conveyor Pulleys
- Dragline Spare Parts Supply, Maintenance and Repairs
- Inpit Drill Rig Maintenance & Repairs
- EME Maintenance and Repairs
- Repair of Frontend Loader Buckets
- Excavator Boomstick Bucket Repairs
- Bushes and Plain Bearings (All Categories)
- Flanges and Flange Brackets (Complete Units)
- Valves
- Seals: Hydraulic
Klinker Rings (Pumps)
Gaskets
Mechanical
- Gearboxes (various types and sizes)
- Power Transmissions
- Gaskets
- Fabric expansion compensators
- Engineering plastics
- Gland Packings
- Continuous Mining Picks

On Site Workshop Erection



Shafts, Sprockets & Bearings



Chains & Flights



PARTNERSHIP WITH MUTALE ENGINEERING

Mutale Engineering Services has an agreement with ACH to augment and support its services to the mining industry by providing precision machining services.

CNC:

- 1 x Daewoo Lynx 200 - 330mm between centres x 150mm turning diameter.
- 1 x Daewoo Puma 240M with live tooling – 500mm between centres x 290mm turning diameter
- 1 x Daewoo Puma 250L – 1300mm between centres x 395mm turning diameter
- 1 x Kia Turn 300 – 737mm between centres x 395mm turning diameter
- 1 x Samsung PL45 with live tooling – 3000mm between centres x 690mm turning diameter
- 1 x Kent KMV16 - 4 axes 1600 x 800 x 800.
- 1 x Samsung Rhino - 3 axes 760 x 450 x 350.

CONVENTIONAL MACHINES:

- 4 x Lathes ranging from 0 to 6 metres between centres by a maximum of 850mm diameter swing in the gap. All machines with digital read out.
- 1 x Turret lathe.
- 1 x Webster & Bennet 72" - 1,8 metres diameter by 1,2 metres high, with Digital readout.
- 1 x Webster & Bennet 48" - 1,2 metres diameter with Digital readout.
- 1 x Tos Boring Mill 100mm spindle, with Digital readout. (Y-travel-1140mm, X-travel-1620mm)
- 1 x Niigata Milling machine size no.4.
- 1 x Cincinnati Vertical milling machine with 2,9 metres X travel.

MISCELLANEOUS MACHINES & EQUIPMENT:

- 2 x Pedestal Drilling Machines
- 2 x Radial Drilling Machines – up to 80mm capacity.
- 5 x CO₂ and Stick welding machines
- 1 x ABB Robot welder.
- 1 x Band saws up to 250mm diameter – automatic.
- 1 x Plasma cutting machine up to 25mm thick plate.
- 1 x Saw
- 1 x 30t Eccentric Press
- 1 x 20t Hydraulic Press
- 1 x 30t Hydraulic Press



PLANTING BACK TO THE COMMUNITY



- Personal Empowerment
- Employment
- Training and qualify local labour
- Economic Development
- Donate to the local communities

Last year we managed to send more than 10 youth to the CTC Program



Middelburg Branch

4 Slegtkamp Street, Unit B,
Vaalbank Industrial
Middelburg, Mpumalanga 1050
Telephone: +27(0)13 110 0365
Facsimile: +27(0)86 551 8785

Witbank Branch

9 Langa Crescent, Office 3,
Corridor Hill Crossing
Witbank, Mpumalanga 1035
Telephone: +27(0)13 692 4667
Facsimile: +27(0)86 551 1883

Reg No.: 2013/063815/07
VAT: 4480263104

www.achgroup.org
info@africh.co.za

